

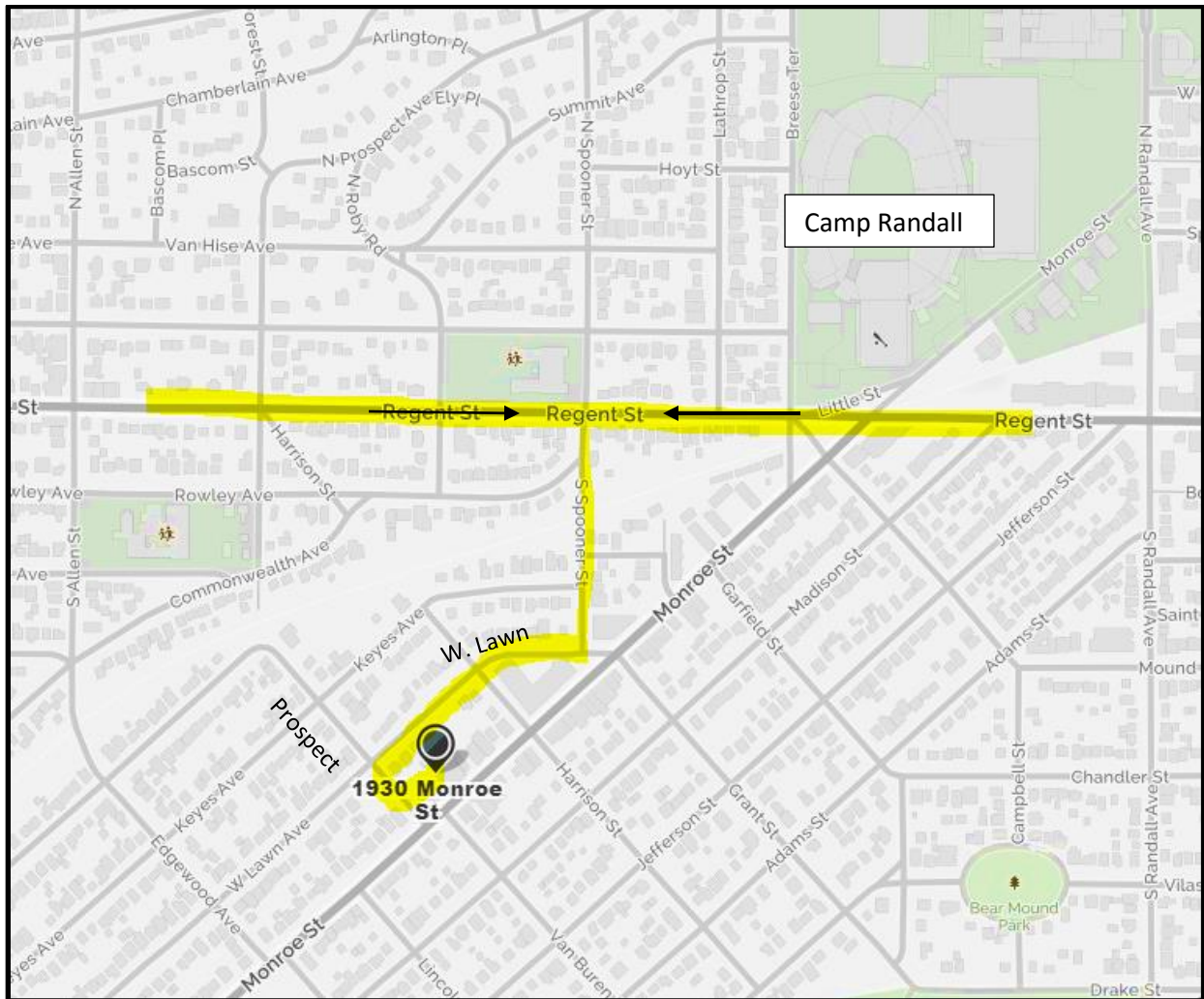
Directions to Madison UW-Center for Tobacco Research and Intervention 1930 Monroe Street, Suite 200

NOTICE: Monroe St. Road Construction is slated to begin March 12th: Monroe St. will be reduced to a single travel lane, moving inbound only (from Nakoma/Odana to Regent St). **This may also affect Bus Service and the nearest bus stops.**

Please allow extra travel time to get to your appointment.

Traffic to Monroe St. will not be possible from downtown or points east. Participants may need to access UW-CTRI from back roads off of Regent St (see yellow highlighted route on map below):

- From Regent St., turn South onto Spooner St.
- Turn Right onto W. Lawn Avenue.
- Turn Left onto Prospect St.



For patient parking, turn left into the first driveway and drive straight back.

- **Red signs** against the fence on the Left indicate patient parking spots (**#37, 38, 39, & 40**).
- Please park only in these spots or in the visitor parking spots (#53 & 54). The parking lot is shared with another University Department and it is important to park in specific stalls.

UW-CTRI offices are located on the second floor, Suite 200. Turn right off the stairs or elevator and go to the end of the hallway. The clinic waiting room is on your right.